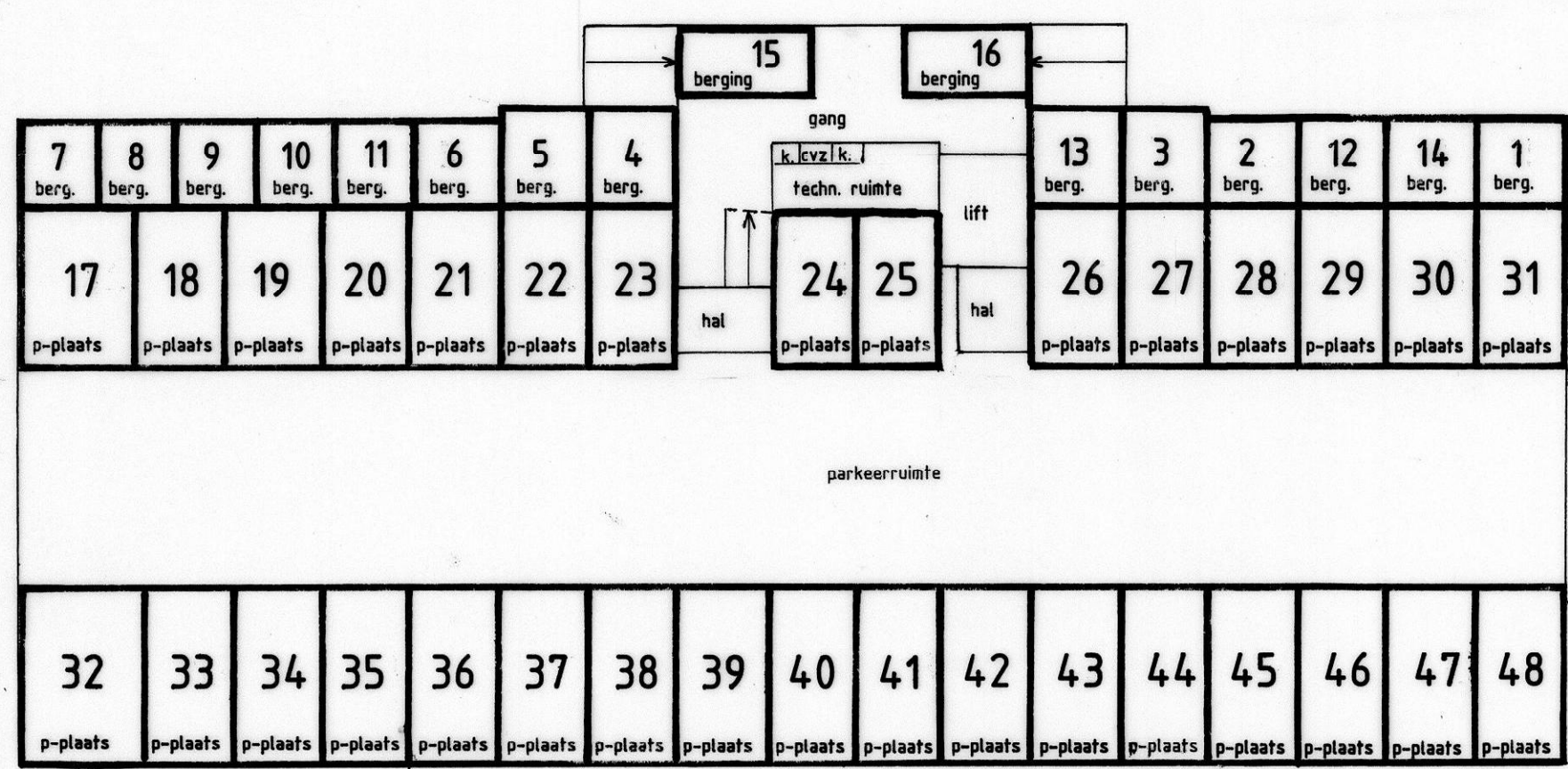
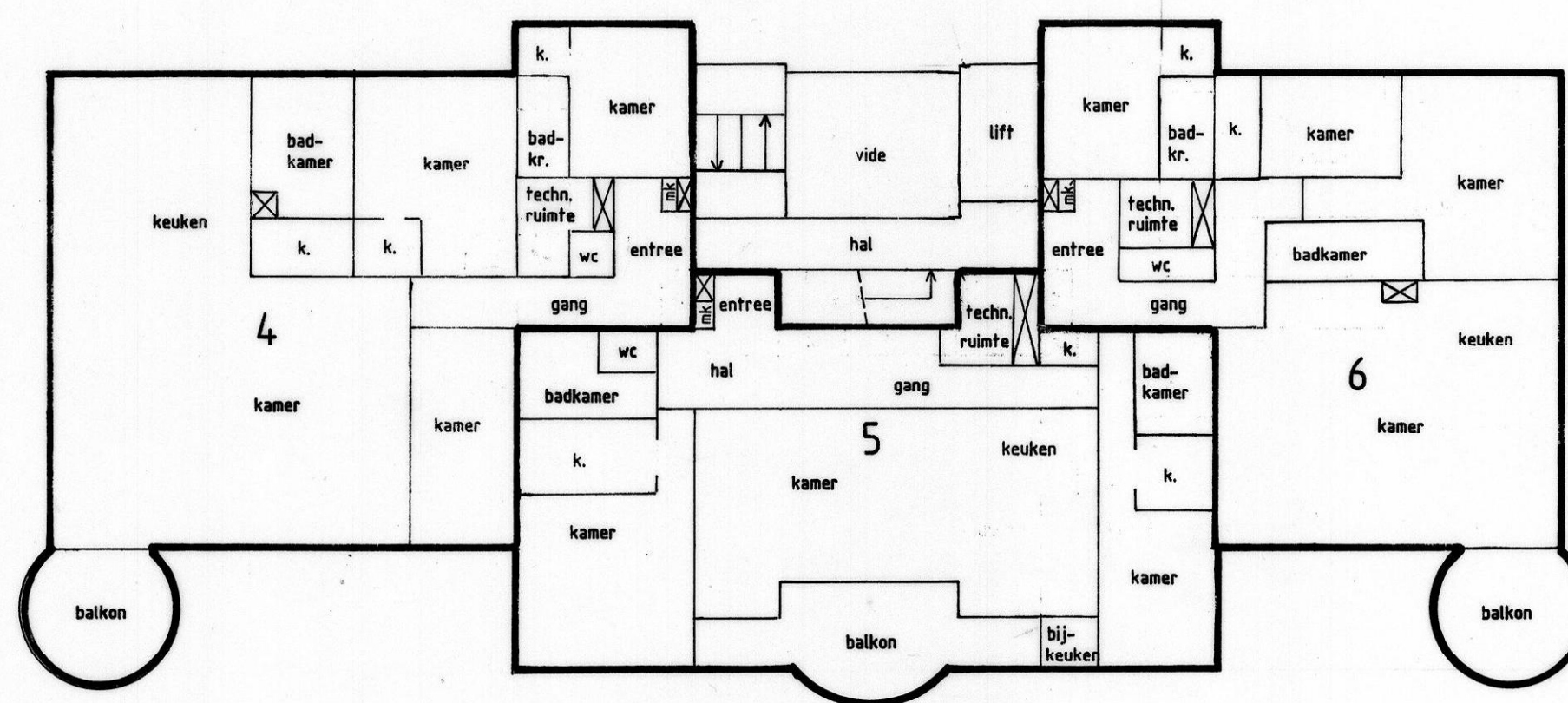


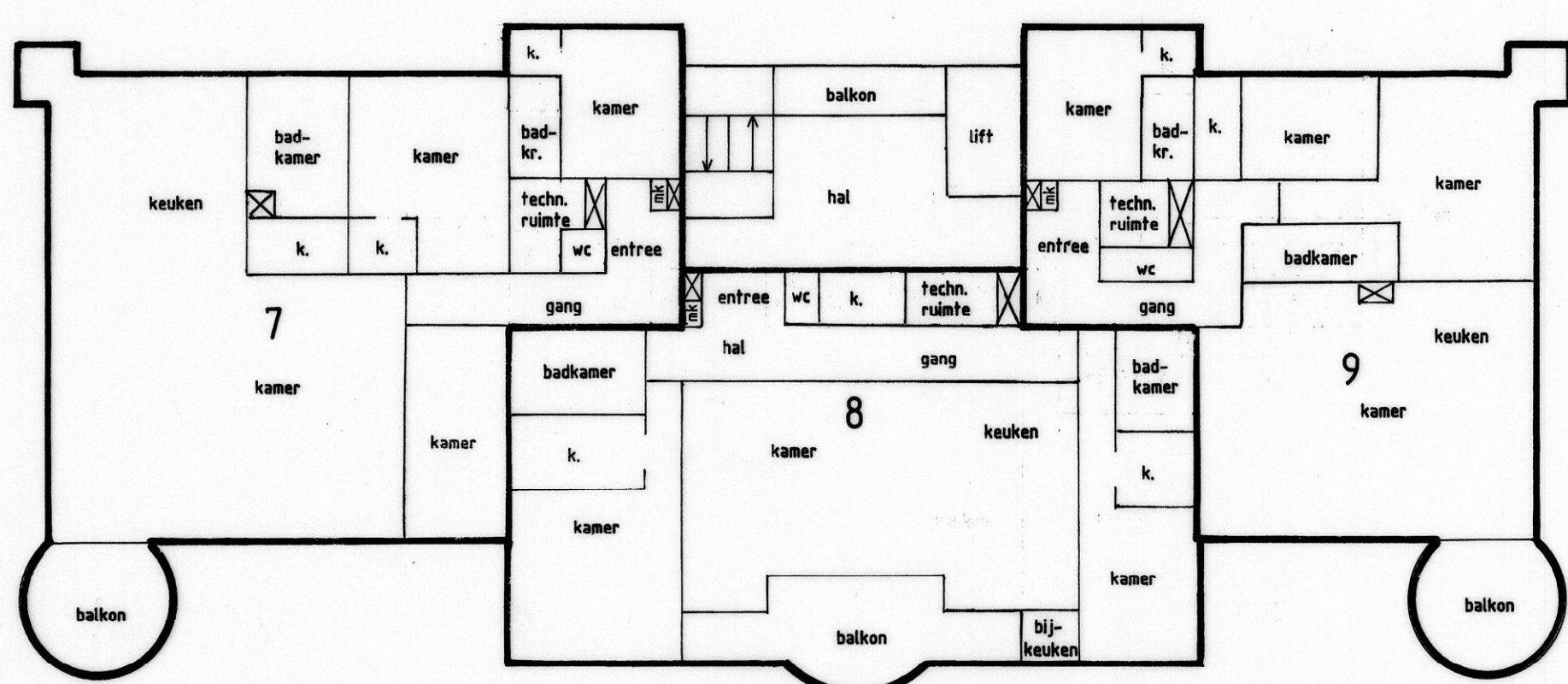
1e WOONLAAG 1 : 200



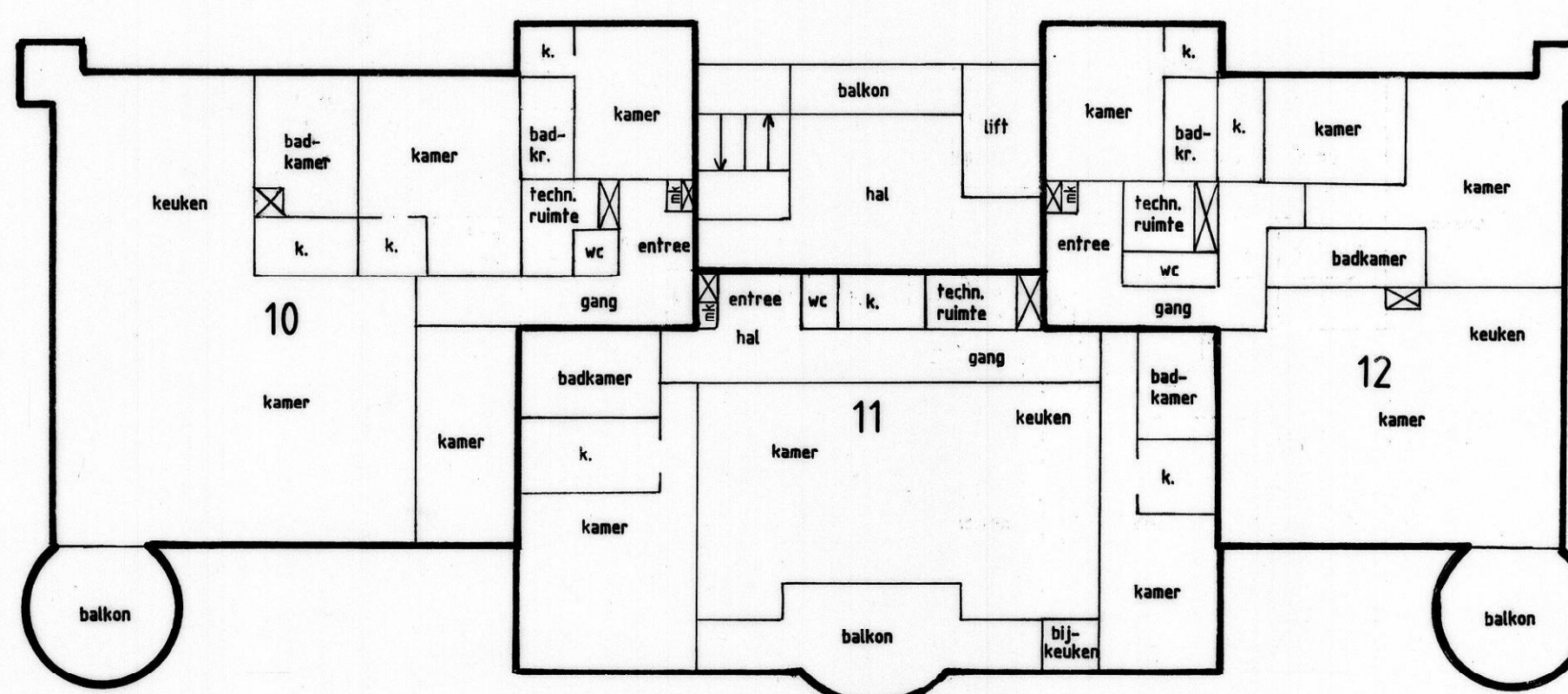
PARKEERLAAG 1 : 200



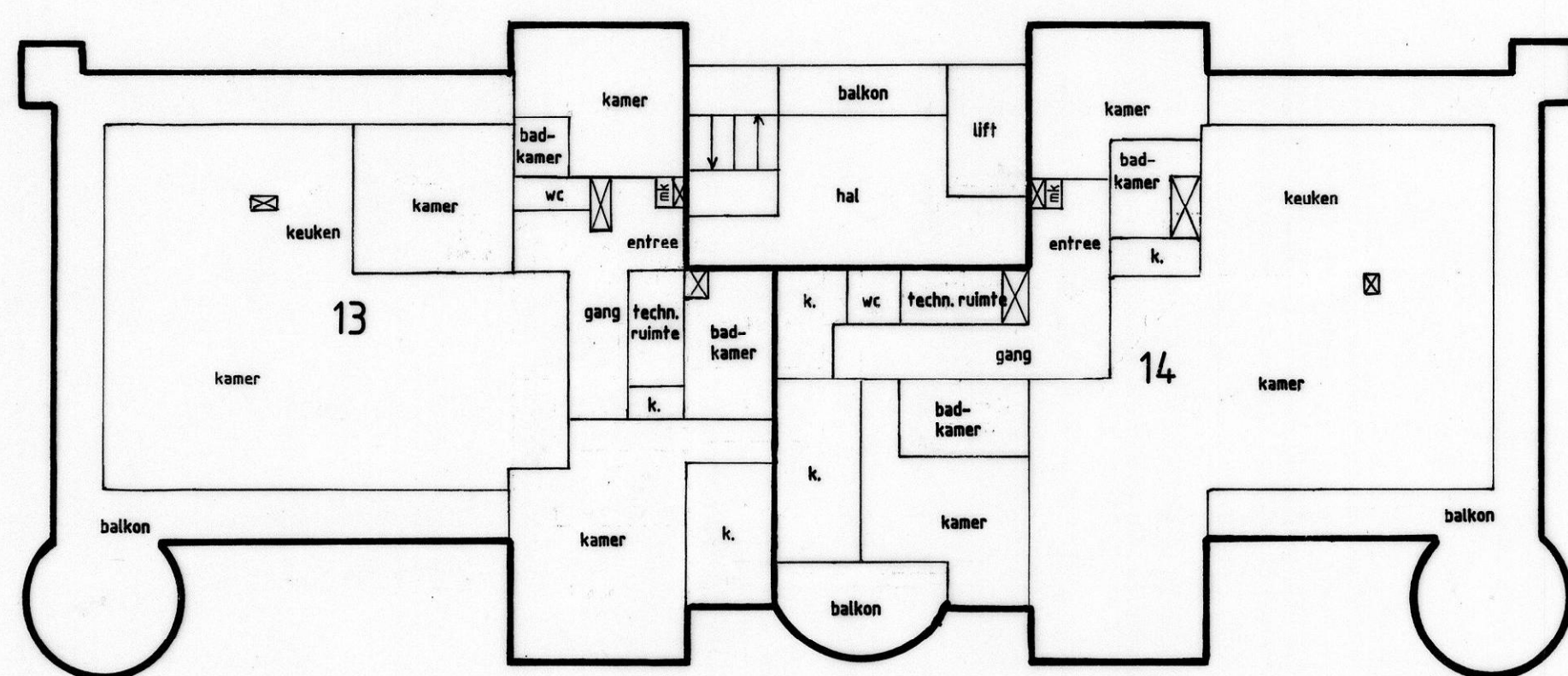
2e WOONLAAG 1 : 200



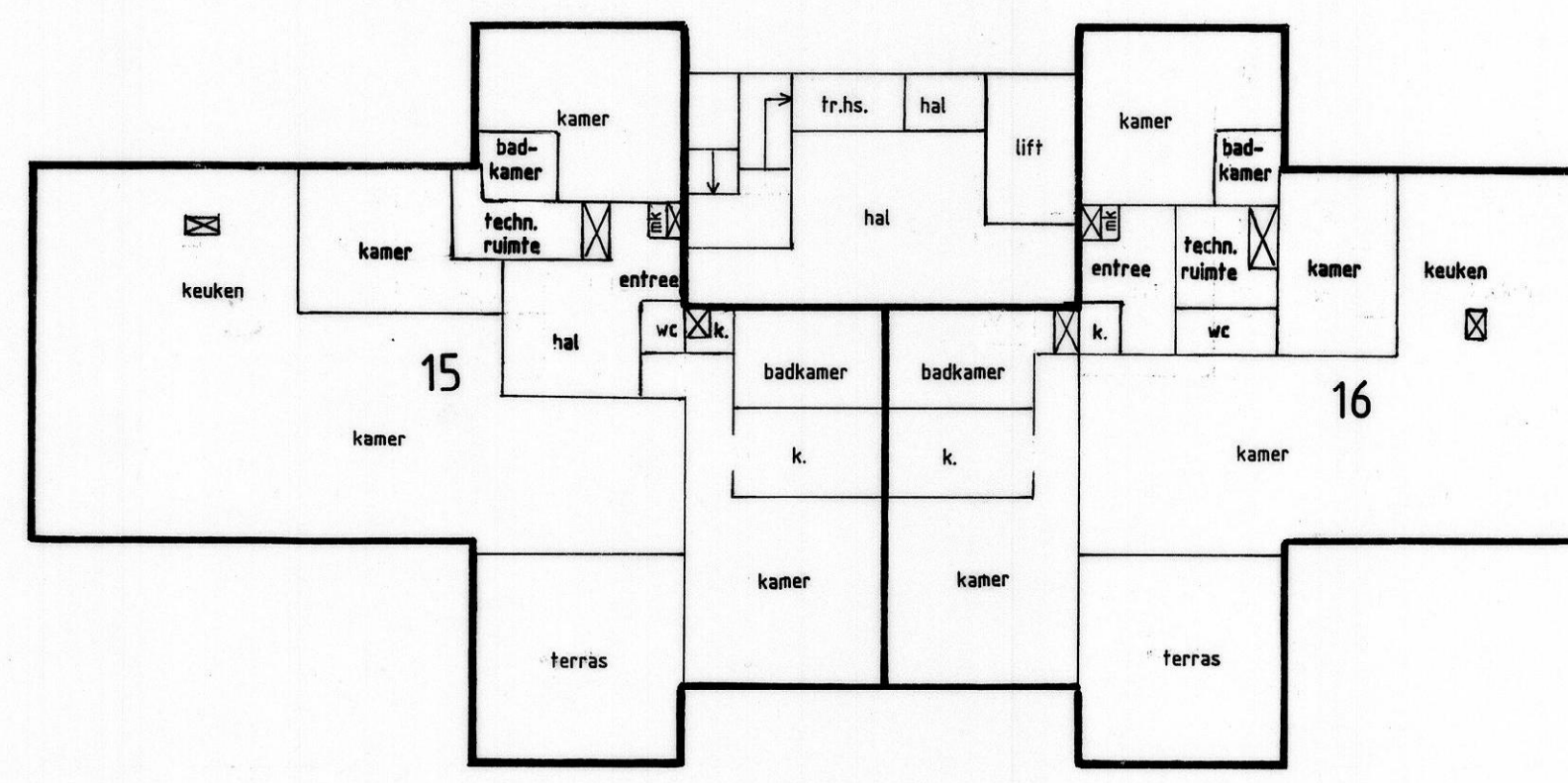
3e WOONLAAG 1 : 200



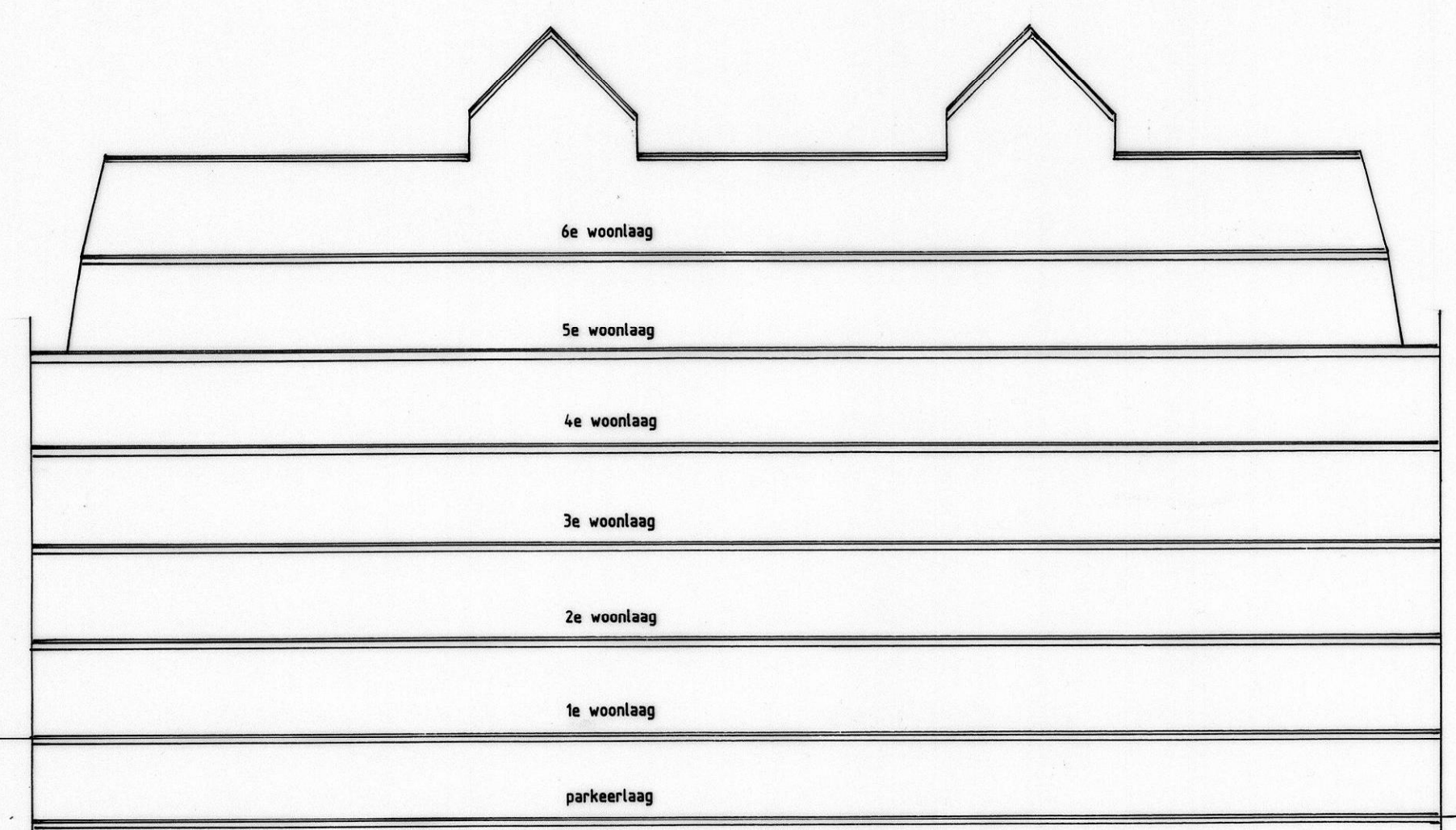
4e WOONLAAG 1 : 200



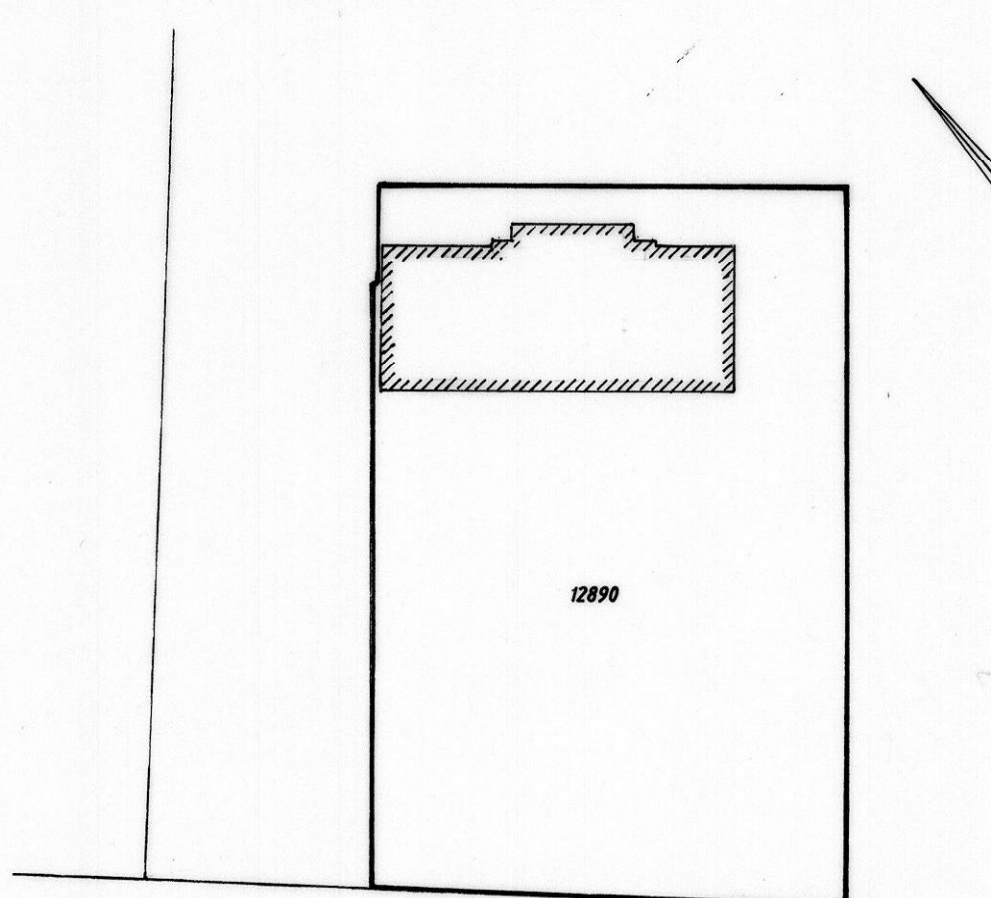
5e WOONLAAG 1 : 200



6e WOONLAAG 1 : 200



DOORSNEDE 1 : 200



SITUATIE 1 : 1000

"het Raast" nabij Duijndal/Springweg Zwambrecht-Boezelanden

VOORGENOMEN SPLITSING IN APPARTEMENTSRECHTEN VAN HET KADASTRALE PERCEEL

gemeente HAARLEMMEER
sectie AD
nummer 12890

d.d.

de notaris,

